

S.D. No.
SHEET 2
APPROVED
BY SUBCOM. CHAIRMAN

GENERAL PLAN
 (COMPRISING OF 3 SHEETS)
 OF THE TOWNSHIP
 SILVER WOODS COUNTRY ESTATE
 PROVINCE: GAITHER
 SCALE: 1 : 750
 DATED: MARCH 2008 BY 145
 W.D. MAUREN, P.O. 1139
 PROVISIONAL LAND SURVEYOR

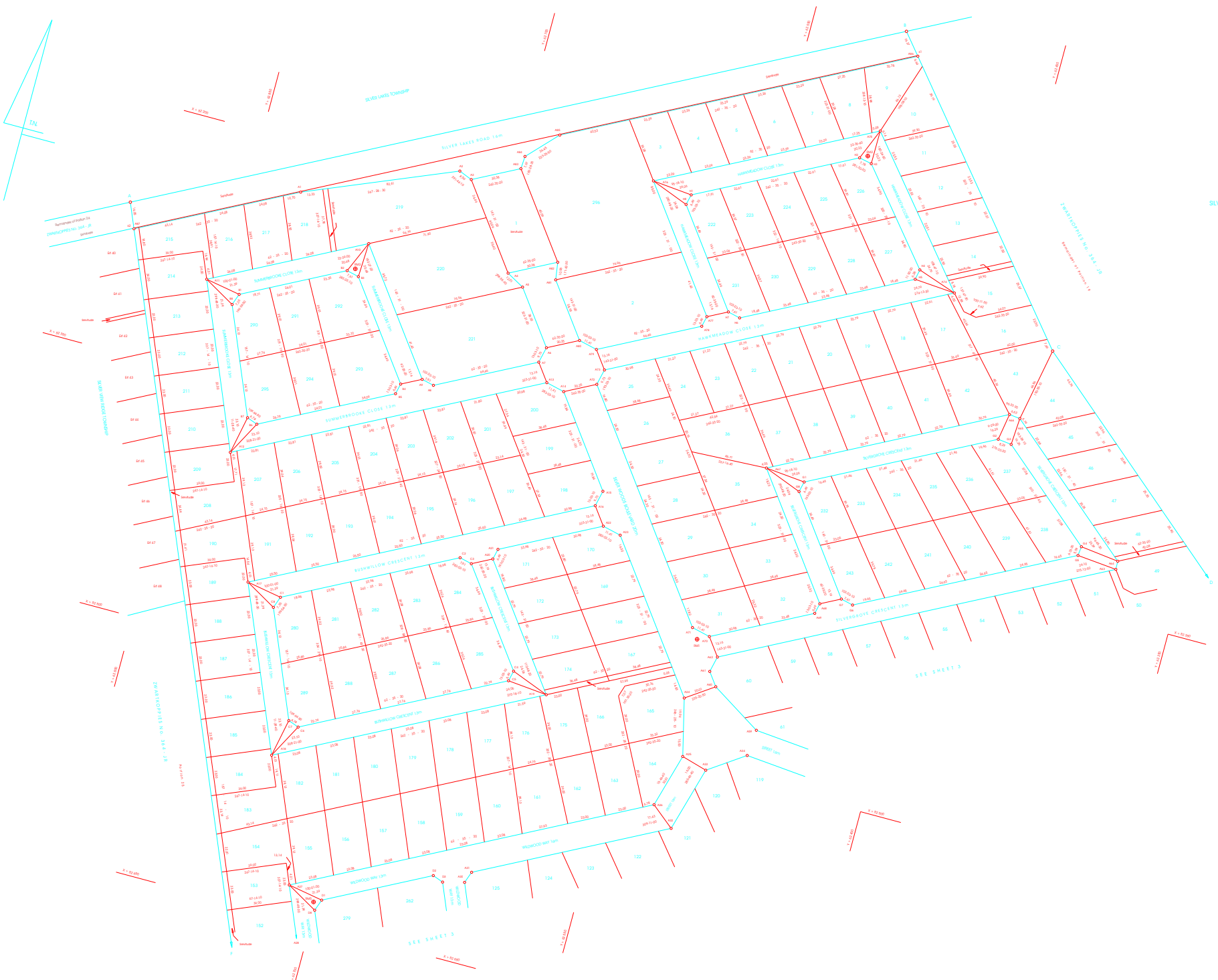


FIG. No.
SURVEY RECORD No.
COMPLAN No. 2004-026, 2004-041
DATED: PRELIMINARY

S.D. No.
SHEET 1
PROJECT
BY SERVICE DESIGN

GENERAL PLAN
SUBDIVISION OF 3.9845 HA
OF THE COMMUNE
SILVER WOODS COUNTRY ESTATE
PROJECT LOCATION
SCALE 1:100
DRAWN BY MARCH 2025 BY W
NO. 11/2025
PROFESSIONAL LAND SURVEYOR

DATE
DRAWN BY
CHECKED BY
SCALE

